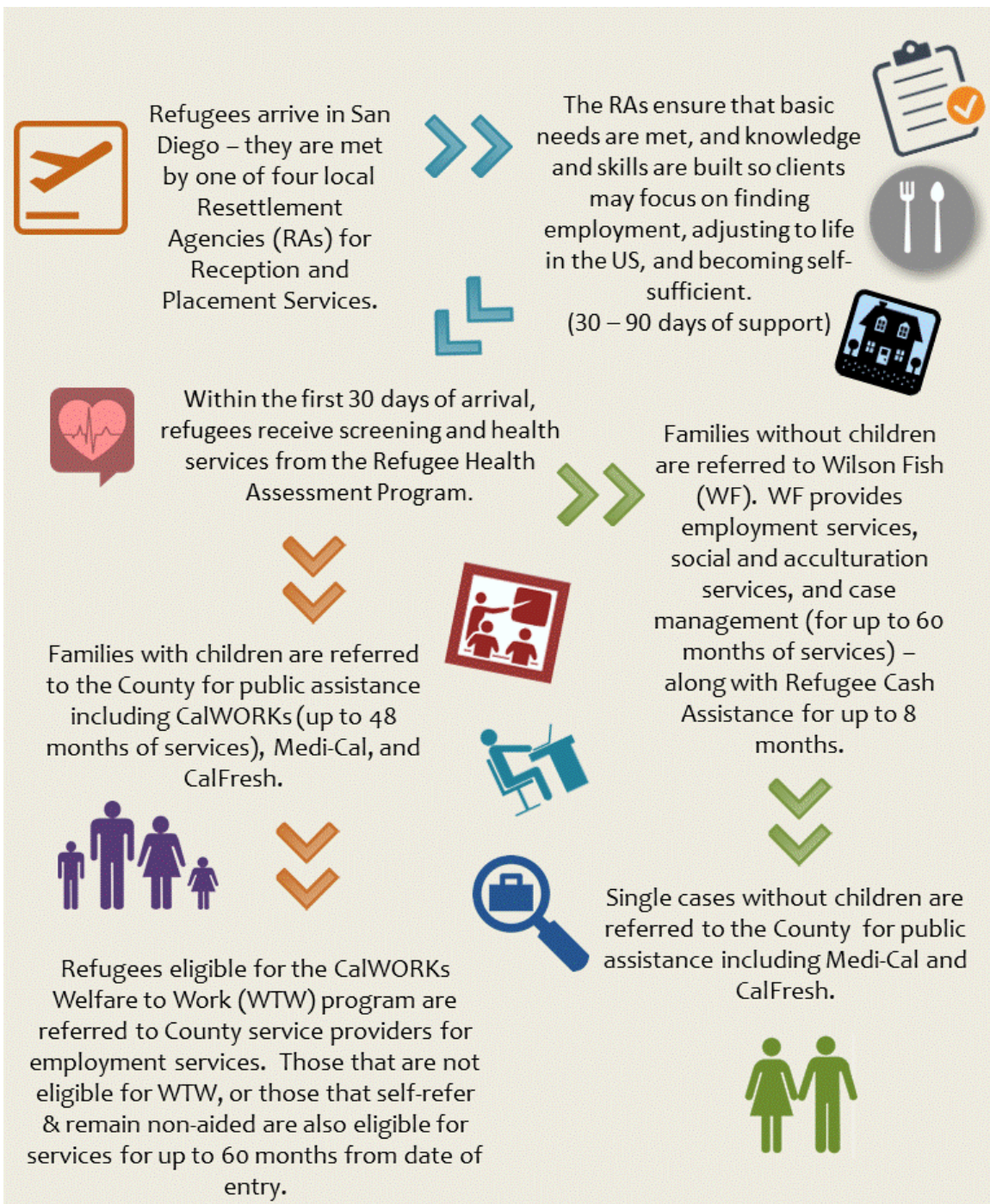


SAN DIEGO REFUGEE RESETTLEMENT PROCESS



San Diego County's Resettlement Agencies

- Alliance for African Assistance
- Catholic Charities Dioceses of San Diego
- The International Rescue Committee, Inc.
- Jewish Family Service, Inc.

The County of San Diego's Welfare-to-Work/RES Service Providers

- East, South, Central and North Central Regions: Public Consulting Group, Inc. (PCG)
- North Regions: ResCare, Inc.

For more information about refugee services in San Diego, visit the following:

San Diego Refugee Forum: www.sdrefugeeforum.org

The County of San Diego, Community Action Partnership:

http://www.sandiegocounty.gov/hhsa/programs/sd/community_action_partnership

COUNTY OF SAN DIEGO

REFUGEE EMPLOYMENT SERVICES

OVERVIEW



Refugee Employment Services (RES) is a program available to assist eligible refugee families to achieve self-sufficiency through employment. RES is administered by the County of San Diego, Health and Human Services Agency's Community Action Partnership (CAP).

Who is Eligible for RES?

- Employment ready CalWORKs participants and some post-aid individuals whose immigration status is Refugee, Asylee, Certain Cuban and Haitian Entrants, and Trafficking and Crime Victims.
- Services for refugees are available for up to 60 months after arrival to the United States.

What Services are Provided with RES?

- All services provided via RES are employment related to lead to job placement and retention.
- Four main categories: employment (job club, career oriented workshops, job development, search, referral and placement, vocational training), English language training (including vocational), case management, and other (information and referral services, translation, acculturation).

What are the Programs CAP Administers for Refugees?

- EMASS – older refugee focused program through Union of Pan Asian Communities (UPAC) to provide outreach, peer mentoring support, linkage to social and health services socialization, acculturation, and reduction of isolation.
- Vocational English-As-A-Second Language (VESL) – a language skills and employment focused program through the IRC that focuses on supporting refugee families to acquire the necessary skills to obtain a job as quickly as possible and develop a plan to upgrade their employment for more hours, better pay and benefits so they can achieve self-sufficiency.
- Work Readiness Exchange (WRE) - work readiness training through the National Conflict Resolution Center (NCRC) to teach participants conflict management strategies, communication skills, and job-related life skills. WRE teaches quality habits to be a good employee, build the capacity in the refugee community to reduce conflict, avoid violence and create a healthier community.

Are there Services Other than Public Assistance Benefits for Refugee Families?

Resettlement Agencies can choose to put refugees in the Matching Grant program instead of referring them to the County or to Wilson-Fish. Matching Grant provides extended resettlement services enabling refugees to achieve economic self-sufficiency without accessing public cash assistance. Match Grant services will preclude refugees from applying for Refugee Cash assistance (RCA) or other public cash assistance for at least the first four months after arrival or eligibility.

Services are offered for up to 180 days after arrival.

For more information about refugee services in San Diego, visit the following:

San Diego Refugee Forum: www.sdrefugeeforum.org

The County of San Diego, Community Action Partnership:

http://www.sandiegocounty.gov/hhsa/programs/sd/community_action_partnership